

WIRELESS HD CCTV Kit CMS Software

Instruction Manual



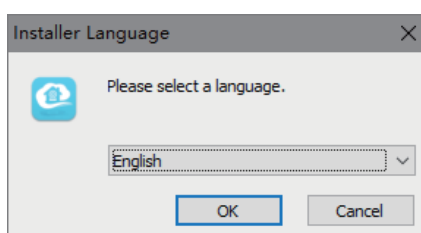
Contents

1. Set Up and Login	3
1.1 Set Up	3
1.2 Set Up Wizard.....	3
1.3 Users Login	4
2. Real Time Viewing	5
2.1 Connect / Disconnect.....	5
2.2 Recording / Screen Shot.....	6
2.3 Panorama Mode	6
2.4 PTZ Control	8
2.5 Split Screen Number.....	9
2.6 Other Functions	9
3. Video Playback	9
3.1 Playback.....	9
3.2 Fixed Time Play.....	10
3.3 Video SYNC	10
3.4 Video Download	10
3.5 Other Functions.....	11
4. Device Management	11
4.1 Add Device	11
4.2 Modify the Equipment.....	12
4.3 Remote Setting.....	13
4.4 Device Grouping.....	13
5. User Specifications	14
5.1 Basic Setting	14
5.2 Advanced settings.....	15
6. More Functions	16
6.1 User Management.....	16
6.2 Log Query.....	17
6.3 Resource Management.....	17
6.4 Electronic Map	18
6.5 System Information.....	18

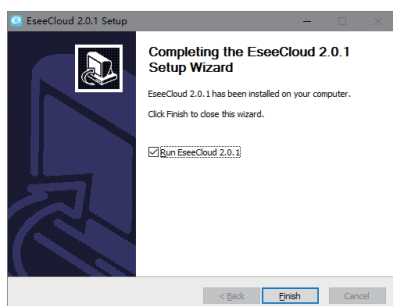
1. Set Up and Login

1.1 Set up

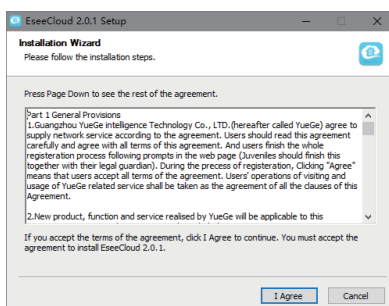
Step1: run Homeguardlink CMS setup.exe install pack. **Step2:** select a display language. **Step3:** read and click accept the protocol or not. **Step4:** select a install path and click install. **Step5:** click finished and you can run the program.



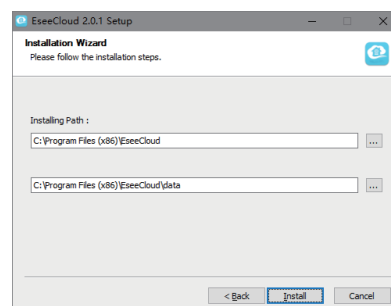
Select a language



read the protocol



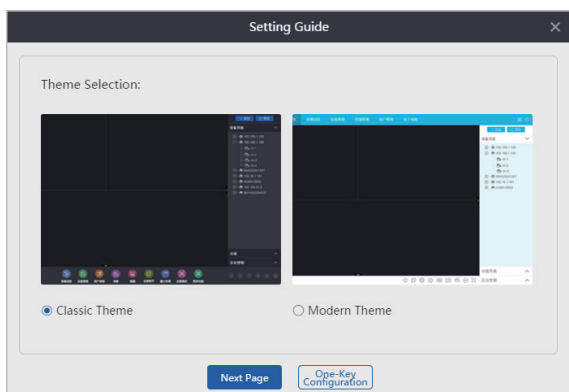
Select a path



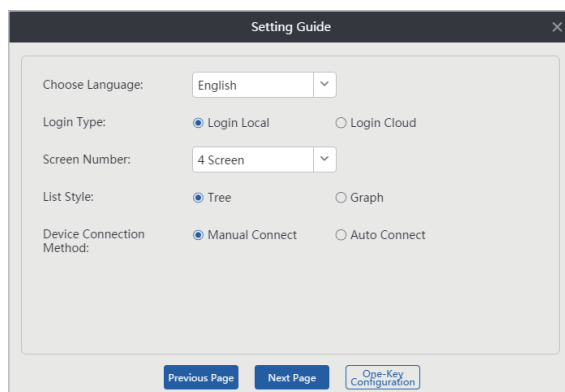
Set up finished

1.2 Set Up Wizard

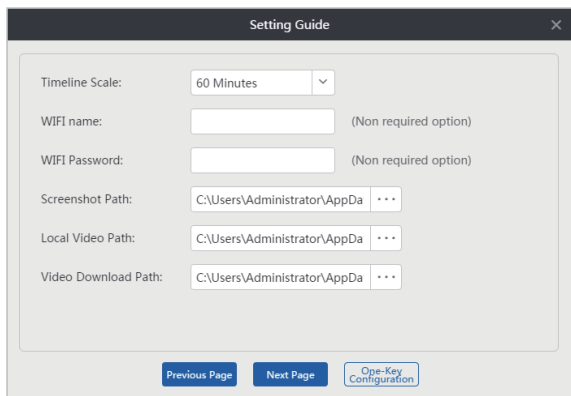
First time log in you'll see a wizard interface, as shows below:



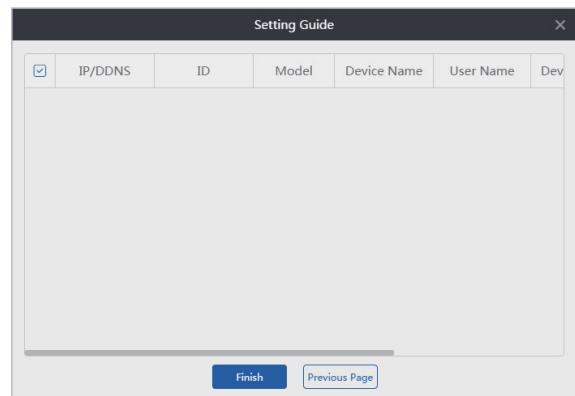
Step 1



Step 2



Step 3



Step 4

1. Select CMS theme

2. Language / log in options / split screen number / list style / device connection method

- Local login is a normal mode, user name is admin, default password is empty.
- Cloud login can use app user name.
- Play back timer shaft scale / configuration / WiFi fill in / choose a save path.
- WiFi configuration function is Temporarily shielded.

3. Device choose

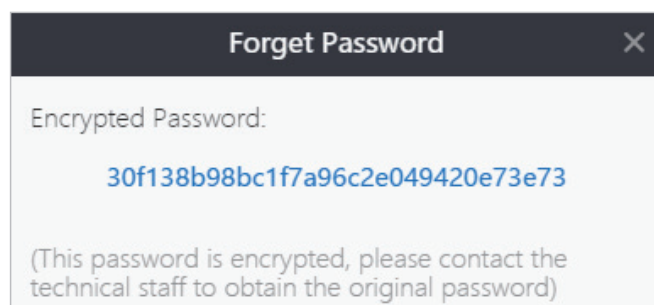
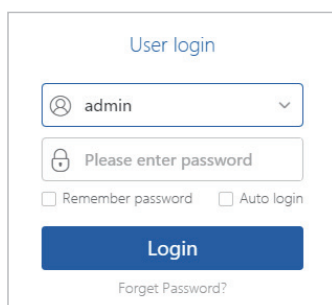
Note:

1. Modern theme include day mode/night mode.
2. After clicked finished, data information shows in the wizard.
3. You can choose one key set up in set up wizard, default setting will be provided by client side, can be revised in the user parameters If needed.
4. If many channels selected in set up wizard, will need some time for automatic adding after login, We suggest you to add channels in the device management after log in.
5. All specifications in set up wizard can be revised at client side, Operators can select depend on current situation.

1.3 Users Login

local login

1. Enter user name + password
 2. Click log in
- Can use default user name admin and empty password to log in.
 - Can remember user name and password (automatic login unavailable when auto-locked status opened).
 - Strings were encrypted in forgot password, different user name point to different encrypted password.
 - User name drop-down box can show maximum three recently used user name.

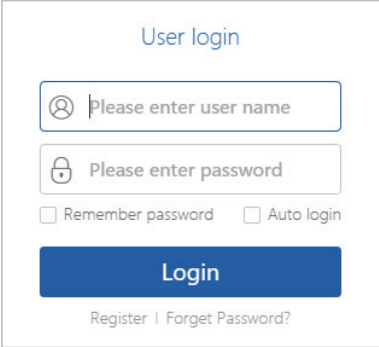
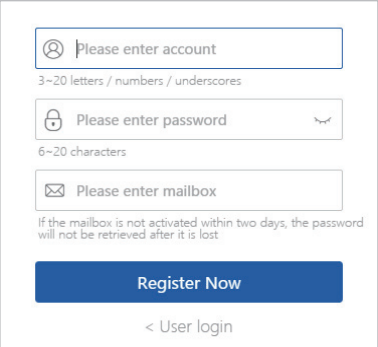
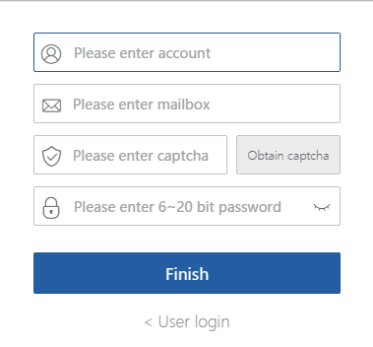


Cloud login

- User login: enter user name + password, remember the password and auto-login (optional), click login.
- Register: 1. Enter a new user name + password + email. 2. Click register.
- Retrieve password: 1. Enter user name + email. 2. Click to get the verification code and enter.

Note:

1. Cloud login must be existed user name (Eseecloud account can login from app side).
2. Please use valid email, for retrieve the password or some special case.
3. After register, a registration confirmation will be send to your Email box, please click the link to activate.
4. None activated email status, retrieve password will be unavailable (activate within two days after register).

 <p>User login</p> <p>Please enter user name</p> <p>Please enter password</p> <p><input type="checkbox"/> Remember password <input type="checkbox"/> Auto login</p> <p>Login</p> <p>Register Forget Password?</p>	 <p>Please enter account</p> <p>3~20 letters / numbers / underscores</p> <p>Please enter password</p> <p>6~20 characters</p> <p>Please enter mailbox</p> <p>If the mailbox is not activated within two days, the password will not be retrieved after it is lost.</p> <p>Register Now</p> <p>< User login</p>	 <p>Please enter account</p> <p>Please enter mailbox</p> <p>Please enter captcha</p> <p>Obtain captcha</p> <p>Please enter 6~20 bit password</p> <p>Finish</p> <p>< User login</p>
Login	Register	Retrieve password

2. Real Time Viewing

2.1 Connect / Disconnect

Tree style list

- Connect:
 1. Select the device / channel double click to enter video connecting status.
 2. Select device / channel right click and choose connect video to enter video connecting status.
- Disconnect:
 1. Select device / channel and right click disconnect.
 2. Right click and choose disconnect all or disconnect current device (as shows in image 2).

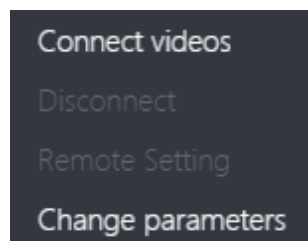


image 1

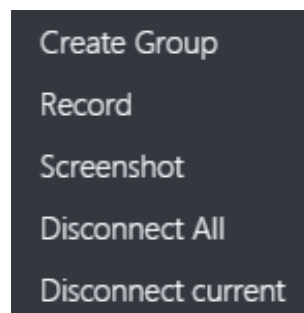


image 2

Chart style list

1. After Select device/channel, click play to enter video connecting status.
2. Select device/channel and then click stop to disconnect.
3. Right click connect/disconnect refer to tree style list.

Note: Poor computer performance might effect video fluency, We suggest you add device channel step by step.

2.2 Recording / Screen Shot

Recording:

1. Click record button in toolbar to enter recording status. (as shows in image 1).
2. Right click and choose record also works (as shows in image too).
3. Click record again will be stop recording.

Note: Real recording time not equal to the time recording start to end.

Screen shot:

1. Click screen shot button.
2. Right click to choose screen shot.

Note:

1. Code stream switching status, screen shot can not download.
2. There is no continuously screen shot function, one picture at once.

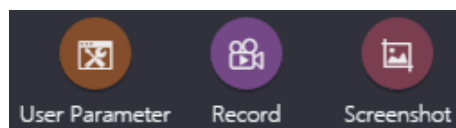


image 1

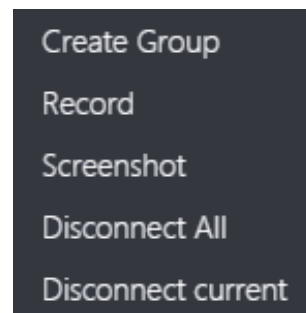


image 2

2.3 Panorama Mode

Panorama Mode

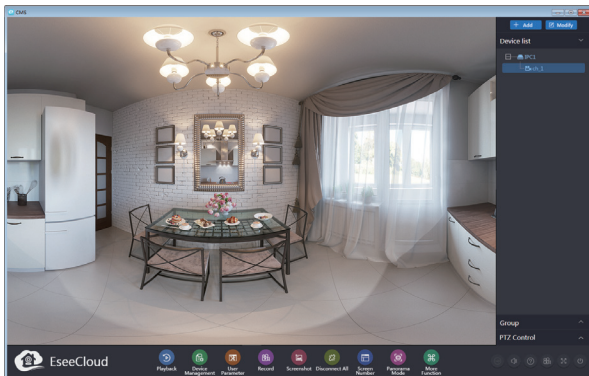
- Enter:
 1. Double click to enter maximum status, right click to choose panorama mode.
 2. Channel mode no split screen status, panorama icon will shows changing status, Click to change to panorama mode.
- Exit:
 1. Right click to choose exit.
 2. Click the panorama mode, then choose exit panorama mode.



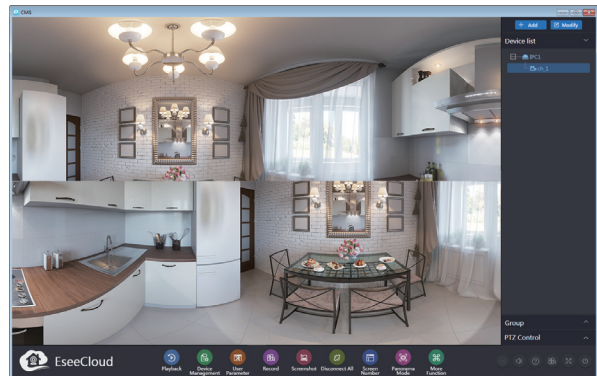
Panorama Mode



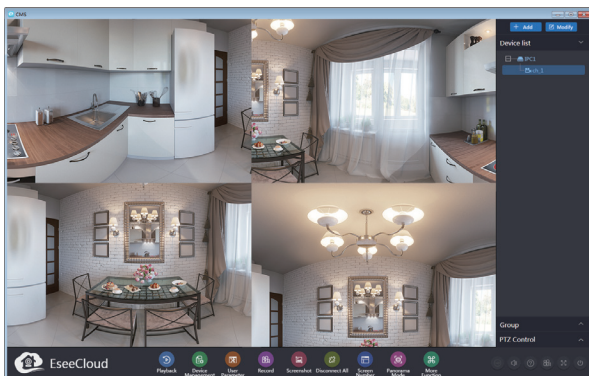
Cylindrical Mode



Unfurled Mode



Two-split Screen Mode



Four-split Screen Mode



Six-split Screen Mode

Note:

1. In the panorama mode, you can select 6 display forms, including: panorama, cylinder, expansion, 2 split screen, 4 split screen, 6 screen.
2. The Panorama mode 4 split screen and 6 split screen can make the preset point patrol, you can add the preset position by Operating the left and right click the channel screen.

Installation mode

- Hanging Installation: patrol will be turn circle by clockwise direction.
- Wall-handing: the direction of the patrol is swinging from side to side.

Cruise Mode

- Speed: the patrol provides 20s, 40s, 60s options, refer to slow / medium / fast speed.
- Stop: pause the current patrol statuses, Click on the left patrol channel or select the stop button in Cruise mode.



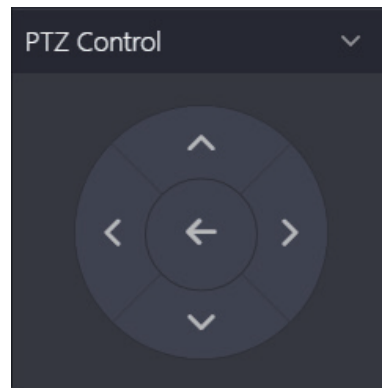
2.4 PTZ Control

Patrol / PTZ / Zoom / Focal Length / Aperture :

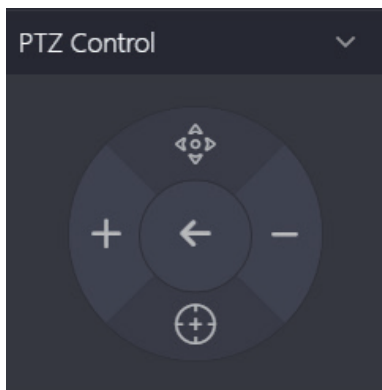
PTZ control function needs PTZ device (such as analog PTZ camera) connect the main control device. Patrol is the direct execution of the picture cruise operation, the PTZ is to adjust the camera direction, and zoom is to replace the mirror multiple.



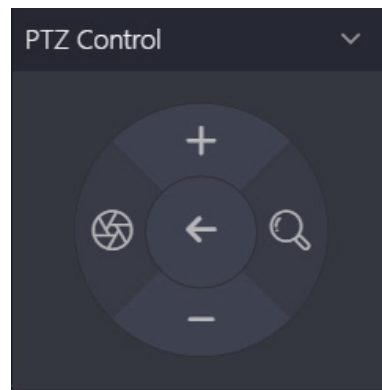
PTZ Control



PTZ



Focal Length



Zoom / Aperture



PTZ direction control button



Focal Length Adjustment button



Aperture Adjustment button



Cruise Function button



Zoom Adjustment button

2.5 Split Screen Number

1. Client-side provide 1 channel, 4 channel, 6 channel, 8 channel, 9 channel, 16 channel, 25 channel, 36 channel, 49 channel, 64 channel, those modes can be switched as you like.
2. When the number of connected device channels is greater than the current split screen, the display screen will automatically increase and stop when Reach 64.



2.6 Other Functions

Clarity switch: SD Standard definition and HD high definition switch buttons.

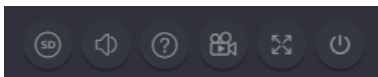
Sound: 1. Select channel. 2. Click close/open sound.

Help: the help button at each interface is the corresponding function operation instructions.

Video: when the real-time preview channel is recording, the icon flashing.

Full screen: 1. Click the full screen button. 2. Click the Esc key to exit the full screen status.

Close: 1. Click the close button. 2. Click ok to close the CMS client.

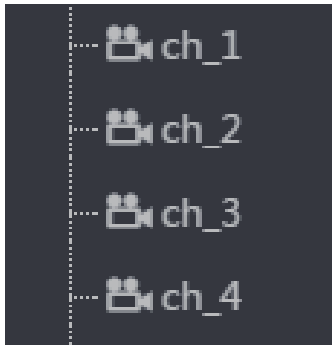


3. Video Playback

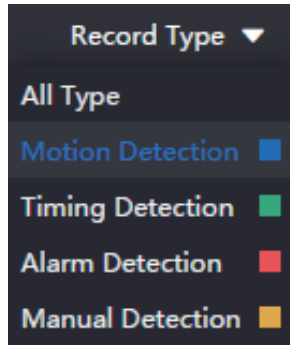
3.1 Playback

Playback four steps:

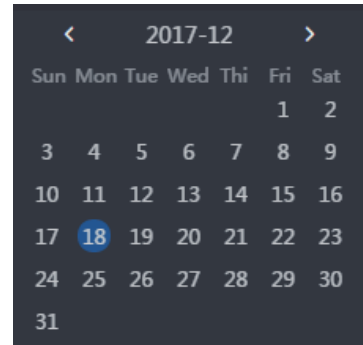
1. Select the device channel.
 2. Select the video type.
 3. Select the playback date.
 4. Confirm the retrieval video.
- The video retrieval requires three conditions at the same time: “device channel + video type + playback date”.
 - Video types include: motion, timing, alarm, manual. Generally, all types of video can be retrieved by default.
 - The selection of the equipment channel can directly affect the retrieval results, and the online status of the device must be confirmed before the video retrieval.



Device Channel



Video Type

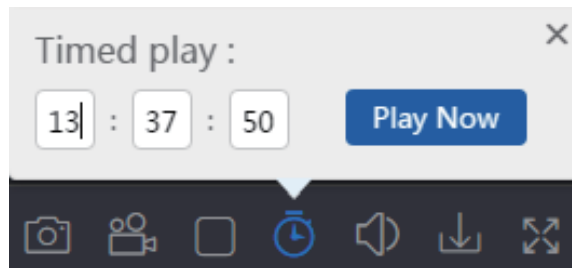


Select Date

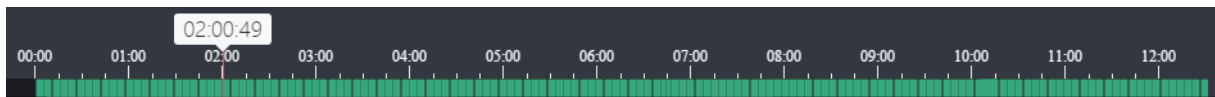
3.2 Fixed Time Play

Fixed time play playback: Select the fixed time play operation, input the video valid time point in the time frame, click ok to play immediately.

Time drag playback: Adjust the time scale and drag the cursor on the timeline to the corresponding time (As shown in the 2 figure below).



1. Fixed time play



2. Time line

3.3 Video SYNC

Operation step: 1. Retrieve the video. 2. Check the SYNC. 3. Switching time point.

Date: check the timing of SYNC, and the different channel synchronization will not take effect.

Time: check synchronization switch time point, the video time of each channel will not take effect during the same time period.

3.4 Video Download

Batch download: in the range of searching time result, the time period of the download should be entered according to the time of the start time + end time.

Period download: the download will also show the time period of the video, and click the download button of any time period according to your own needs.

Start Time: 2017-12-18 00 : 00 : 00 End Time: 2017-12-18 23 : 59 : 59 Batch Download

Define bulk download

Channel	Start Time	End Time	Type	Operate
1	2017-12-18 16:16:58	2017-12-18 16:21:58	■ Timing Detection	↓

Select the time period to download

3.5 Other Functions

Play control: video playback supports playback / pause / stop control, select the screen form in playback and click operation.

Hidden timeline: switching to video playback, the timeline displays a “hide” small key that can be used to hide the timeline when playback.

Time scale adjustment: the setup wizard doesn't set the Settings, the playback time axis will default to 60 minutes, and video playback can also be used to modify the scale by clicking “shrink” or “magnification”.



Play Control



Hidden



Adjust the scale

4. Device Management

4.1 Add Device

Add device by network:

1. Enter the device management interface.
2. Refresh LAN devices.
3. Check the device to add (The LAN device can be filtered by the input IP/ID in the filter box).

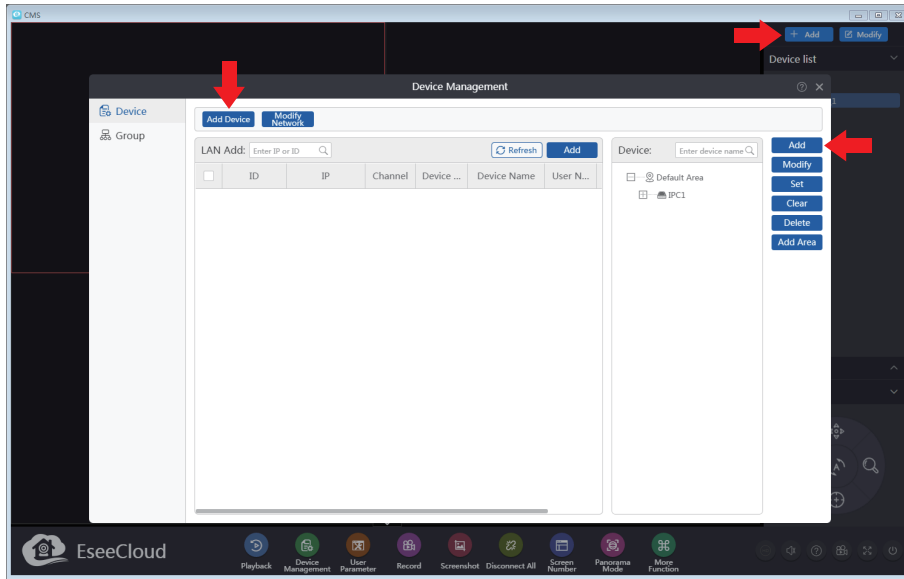
Add Cloud ID: Manual input devices “cloud ID + channel number”, choose “type”, according to the condition, and the remaining default is to click ok (password can choose according to the actual circumstance of equipment set up input).

Add IP/DDNS: Manual input device “IP/DDNS + port + channel number”, select “type” according to the actual situation of the device, and the remaining default can be clicked ok.

LAN Add: Refresh Add

<input type="checkbox"/>	ID	IP	Channel	Device ...	Device Name
<input type="checkbox"/>	623	192.168.13.142	12	NVR	

Add device by network



Manual input addition

4.2 Modify the Equipment

Modify the equipment: Under the device management or preview interface, click modify after selecting the device, which will load the modification device interface (As shows in image 1).

Regional modify: After selecting the selected area in the device management, click the modify button to load the modified area information interface (As shown in image 2).

Grouping modify: When you select groups in the preview screen, click the modify button to load the modified group information interface (As shows in image 3).

Note: Changes in the equipment channel serial number corresponding to the channel name, panoramic view, types, each serial number corresponding panoramic or channel types are independent and need the channel equipment into a panoramic status which can select the corresponding channel number, modified panoramic and channel type.

1. Device Modification

2. Area modification

3. Grouping modification

4.3 Remote Setting

Setting step: 1. Select device 2. Click setting / Remote setting button (Refer image 1, 2).

Device Information: Content including device model, device ID, OED serial number, firmware version (provide check the update).

Function Setting: Function configuration, tips sound, tips language and display mode, resolution can be set up on here.

Alarm Settings: content including mobile detection, push notification, motion detecting sensitivity and synchronization time function.

TF card Settings: TF card status, the available/the total capacity, TF card memory format function.

Note:

1. Do not support alarm push notification in local login, and you need to switch to cloud login status.
2. The VR cam device is supported for remote setting at present.



Image 1

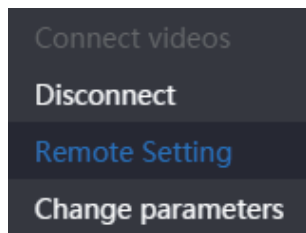


Image 2

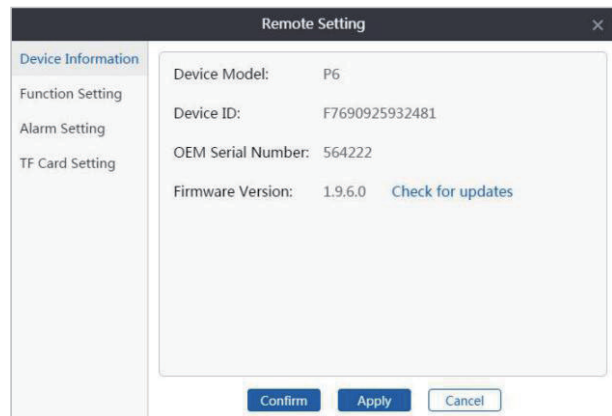


Image 3

4.4 Device Grouping

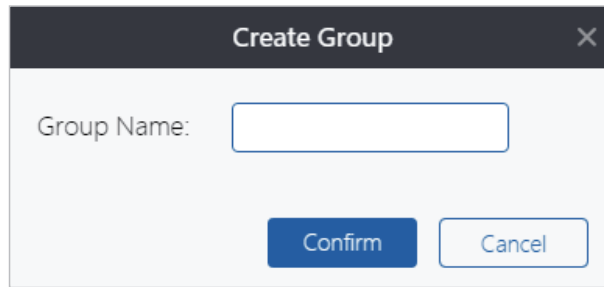
Create groups: 1. Click the “create group” button. 2. Input “group name” then click ok.

Add Channel

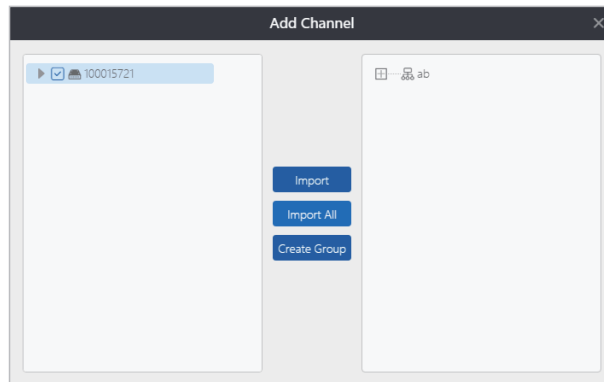
- Enter: select created group and click add channel button.
- Import: 1. Select the channel. 2. Select group. 3. Click the Import button.
- Import All: 1. Select group. 2. Click Import All button.

Modification / Delete

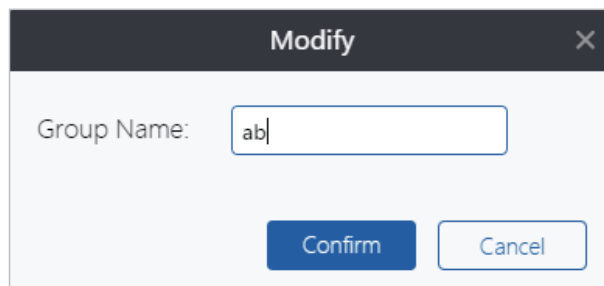
- Modification: Click modification button to modify after selected grouping.
- Delete: Click Delete button to delete after selected grouping or channel.



1. Create Group



2. Add Channel



3. Change Group

5. User Specifications

5.1 Basic Setting

Theme: CMS provides classic theme, modern theme, click application or confirm switch to the corresponding theme.

Split screen number: the selected split screen number is displayed after login, the CMS provides the split screen 1/4/6/8/9/16/25/36/49/64 Total Ten forms of choose.

Display language: CMS has two display language:simplified Chinese and English. After choose and login again,it will change to the language you want.

Login: online mode which need to connect to network. But local login don't need.

List Styles: the change is the device list show for real time preview and playback interface. The device list of other interface are all for tree style.

Path Modification:

1. Screenshot path: Screenshot files save in the snapshot folder by default or can save to other path according to your needs.
2. Local video path: local video kept in the record folder, can choose to save in other path according to own needs.
3. Video download path: the download files will save to video_download folder by default

Note: After modify setting, click “apply” then CMS will change accordingly but you need to log in again.

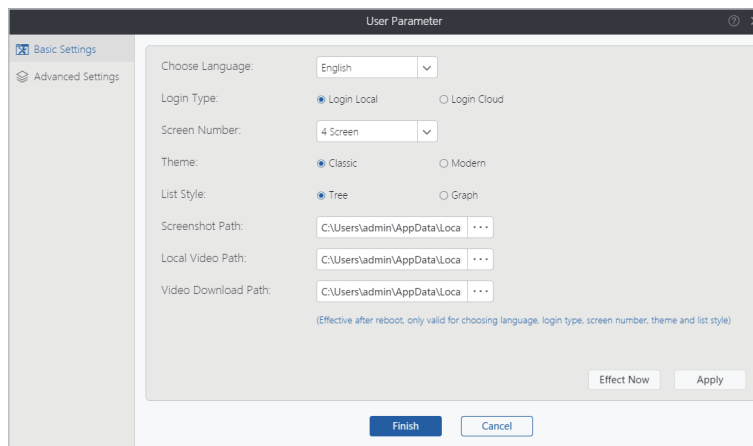
5.2 Advanced settings

Time Zone Setting: you can choose your local time zone.

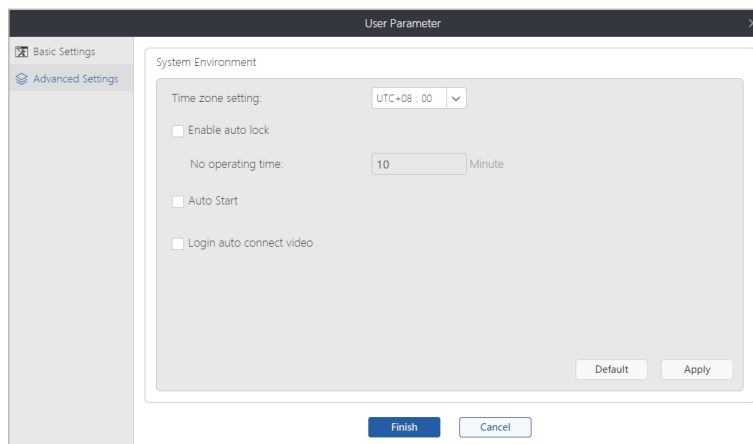
System Lock: click Enable auto lock, input the time for no operating time.

Auto Start: click Auto Start, CMS will run after power on computer.

Auto Connect Video: click Login auto connect video, Automatically connect to added equipment on list, connect the channel number based on the number of split screen in a set.



Basic setting



Advanced setting

6. More Functions

6.1 User Management

Create users:

1. Click the create user.
2. Enter your user name (required) + Remark name (optional).
3. Click confirmation.

Modify permissions:

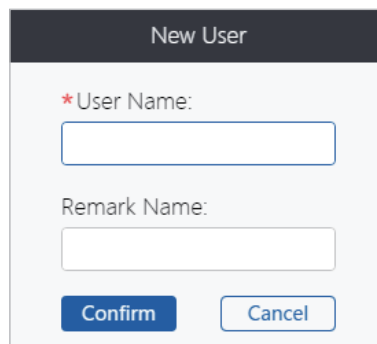
Default: Permissions include screenshot, Video, cloud setting, video playback, remote download.

Modification:

1. Click modification permission.
2. Check need to give permissions to new user and the device/channel (click the full select if need).
3. Click confirmation.

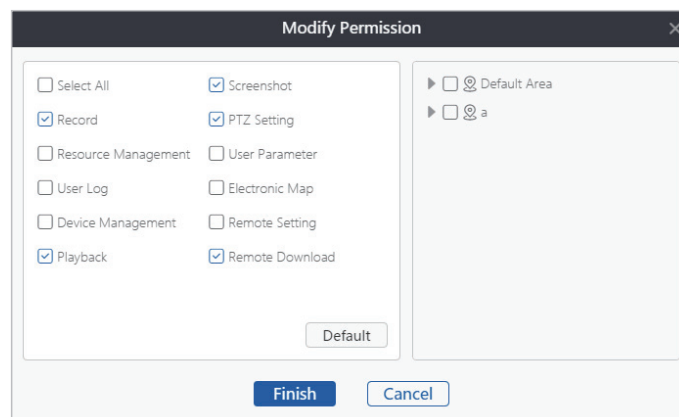
Other Functions:

- Empty password: when the user forget login password, the password can be empty by direct operation, so that the new user can be re-login and the internal Settings data can be retained.
- Change Remark: Add remarks , change remarks or delete remarks ,to operate in Modify remarks .
- Delete User: Click delete user if think that the create user is unnecessary .



The 'New User' dialog box features a dark header with the title 'New User'. Below the header, there is a red asterisk followed by the label '*User Name:' and an empty text input field. Underneath, the label 'Remark Name:' is followed by another empty text input field. At the bottom of the dialog, there are two buttons: 'Confirm' and 'Cancel', both with a blue gradient.

Create users



The 'Modify Permission' dialog box has a dark header with the title 'Modify Permission' and a close button (X) on the right. The main area contains a list of permissions with checkboxes. The checked items are: Record, Playback, Screenshot, PTZ Setting, and Remote Download. The unchecked items are: Select All, Resource Management, User Log, Device Management, User Parameter, Electronic Map, Remote Setting, Default Area, and a. At the bottom of the list is a 'Default' button. At the very bottom of the dialog are 'Finish' and 'Cancel' buttons with a blue gradient.

Modify permissions

Modify User

6.2 Log Query

Query: 1. Confirm start time + ending time 2. Log type (include: alarm log, login log, operation logs)
3. Selected area 4. click query (shows in image 1)

Export: 1. Query log 2. Click Export 3. Open the file to confirm (shows in image 2)

Image 1

Image 2

6.3 Resource Management

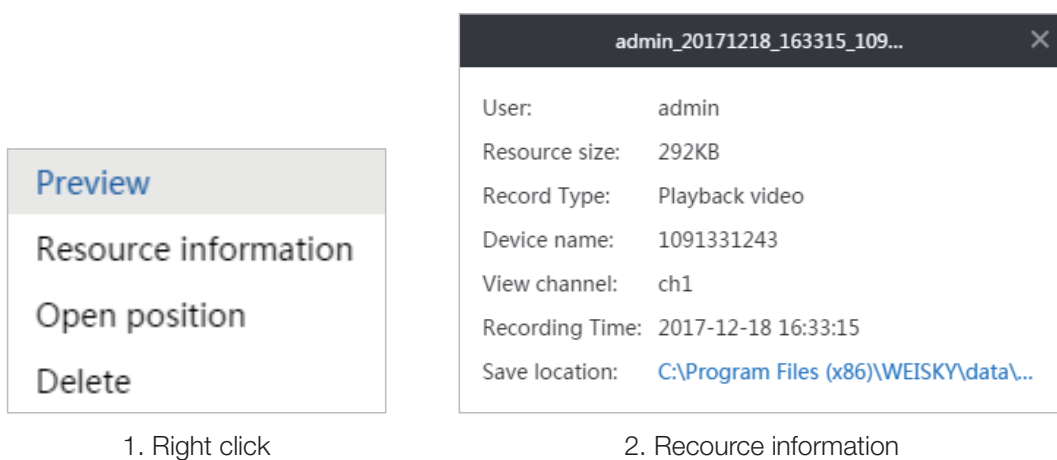
Screenshot:

- Search: 1. Chosed start time + ending time. 2. Start to search.
- Preview: Method 1: Select “preview” in right button. Method 2: Directly click researching screenshot files.
- Delete: Method 1: Select “delete”. Method 2: Come into Screenshot Preview Status, Then click “delete”.
- Location: Method 1: Click on the location in right button. Method 2: Click “save location” in resource information.

- Resource information: “user, resource size, resolution, device name, channel, screenshot time, save location”, including the above contents (as shown in figure 2).
- Change size: “original size, maximize, magnify, shrink, resource information, delete”, and screenshot preview status includes can be switched to the above status/function.

Video

- Search : 1. Chosed start time + ending time. 2. Select video type (include: preview video, play back video, default all types). 3. Click on Searching.
- Resource information: “user, resource size, video type, device name, channel, video time, save location”, including the above contents.
- Other functions: “preview, resource information, location, delete” operation steps same as screenshot, can refer to the operation in the screenshot.



6.4 Electronic Map

Upload Map: 1. Click “Upload Map” button to choose the image files. 2. Choose the Intra-area channel and Drag and load onto the map. 3. Click “Save”.

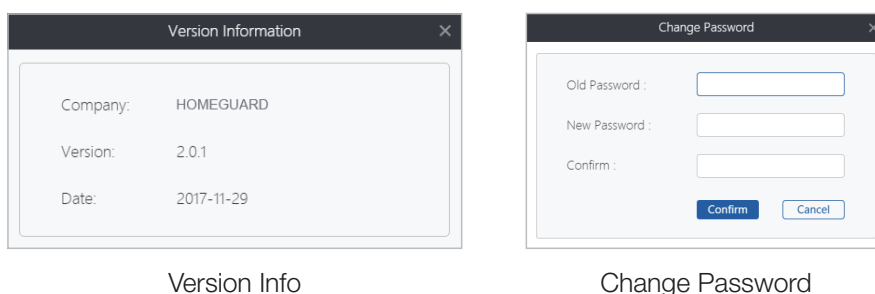
Delete Channel: 1. Click the channel on the load map. 2. Click Delete button.

6.5 System Information

Version Information: The contents are shown as follows: company name, version number, date.

Modify Password: 1. Input “original password + new password + Confirm new password”. 2. Click on confirmation. 3. Confirm the new password to login authentication codes.

Log out: Click on the “log out” button to exit the current account login state.



iGET
HOME  [®]
GUARD